

# Replacing Aluminum Bars on Style# 79315

## Rock Grip Wading Boot-Aluminum Bar

**\*\*Always inspect both boots thoroughly to determine the extent of the wear of the aluminum bars, metal screws and metal inserts.**

### **Replacing the Aluminum Bar:**

**Shoe sizes: 5- 10 – 3 Short Bars and 2 Long Bars –Per boot (6 and 4 for the pair)**

**Shoe sizes: 11-14 - 3 Short Bars and 3 Long Bars – Per boot (6 and 6 for the pair)**

### **Replacing the Machine Screws:**



**Nickel Plated Steel –Phillips Flat Head Screw**

**Shoe sizes: 5- 10 – 17 screws per boot (34 for the pair)**

**Shoe sizes: 11-14 – 18 screws per boot (42 for the pair)**

### **Replacing the Inserts:**



**Shoe sizes: 5- 10 – 17 inserts per boot (34 for the pair)**

**Shoe sizes: 11-14 – 18 inserts per boot (42 for the pair)**

**Loctite –Blue 242 is applied to the end of the screw to provide additional strength to limit screws from loosening during usage.**



**This can be purchased at any hardware store or home improvement store. Typically in 0.2 oz. tube and retails for approximately \$ 5.00 - \$6.00; depending on where purchased.**

### **Tools needed for Repair:**

- # 5 Allen wrench
- Phillips screwdriver



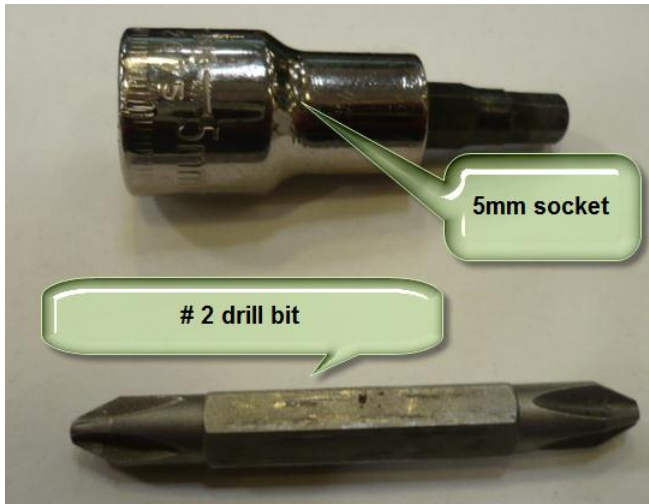
**Claw hammer – to pry bars from shoes**



Also can be done with a Power Cord/Cordless Drill or Impact Driver

Tools needed for use with power tools:

- 5MM socket adapter
- # 2 reversible drill bit



To remove the bar:

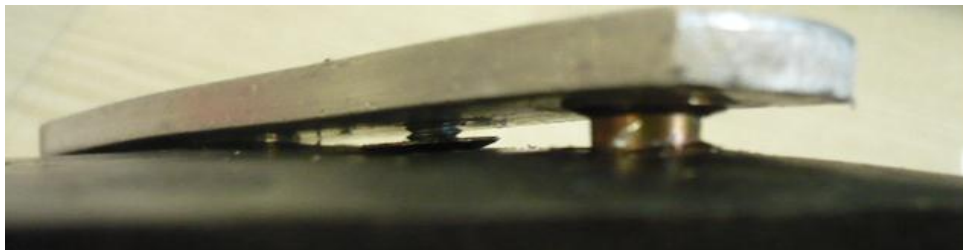
First-use Philips head screwdriver or # 2 bit for drill—turn in a counter –clockwise motion (make sure to apply pressure to insure screwdriver is fully seated into the screw head).

The screw will either start to turn or the head will start to strip.



The stripped thread screw will then need to be pulled out with a claw hammer.

The functional screw will continue to back out of the shoe; however in most cases the insert will begin backing out as well.

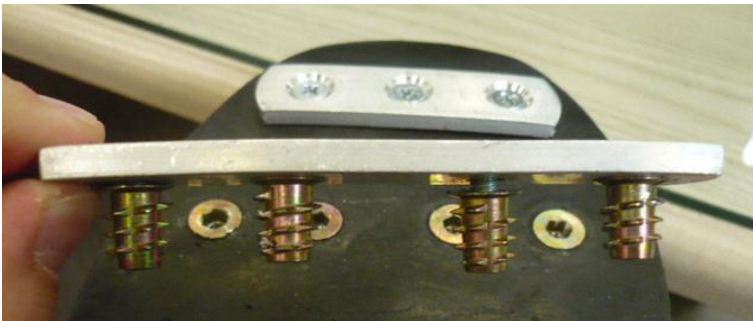


**Insert the claw end of the hammer at the end of the bar where there is space between the sole and the bar.**



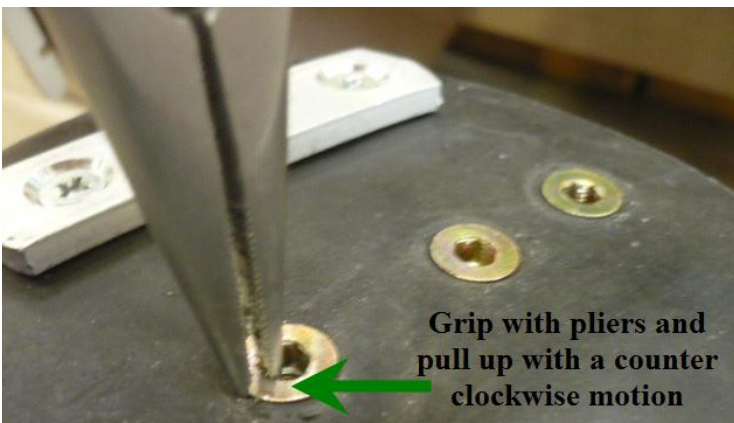
**Gently pry the bar in upward motion, moving along the bar toward the opposite side of the shoe.**

**Once the bars are removed, this is how they will appear as well as the shoe:**



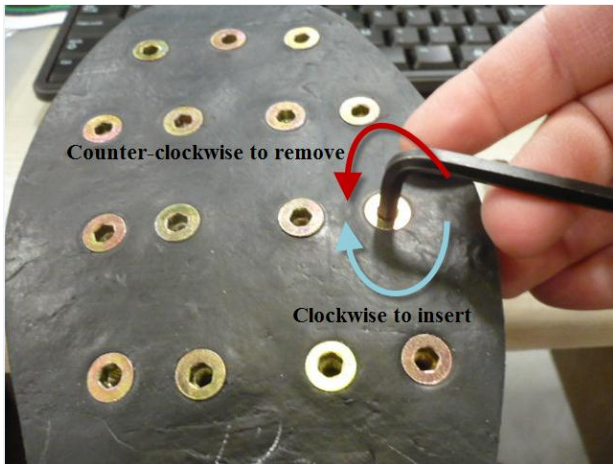
**If an insert does not remove from the sole, it can be removed using needle nose pliers or similar tool.**

**Grip and pull up with a twisting counter clockwise motion.**

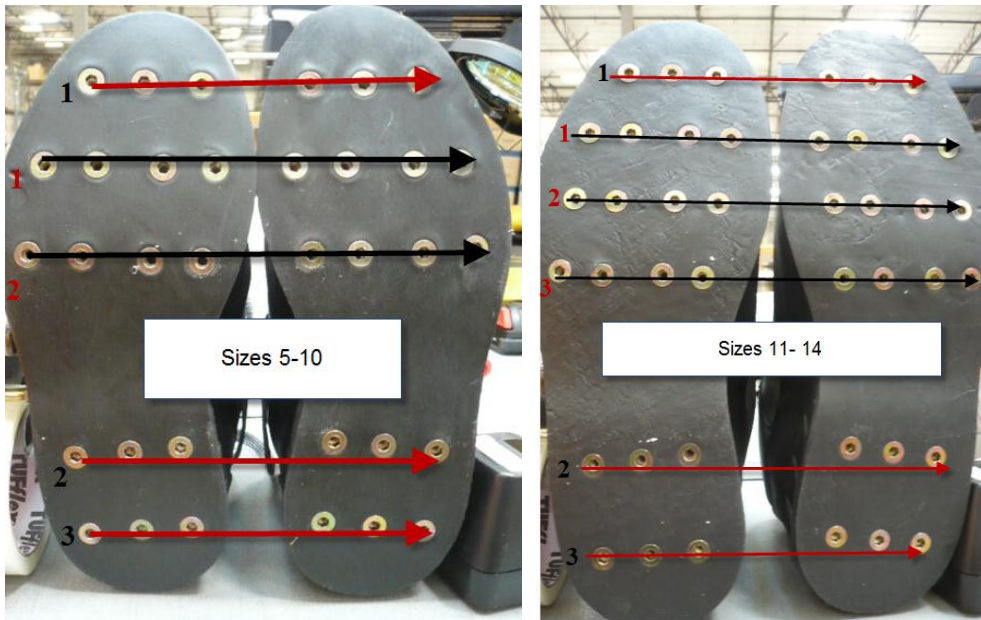


**Once all inserts have been removed, then replacement can begin.**

**When replacing the insert apply gently pressure and push into the sole of the shoe with a clockwise motion.**



**The inserts need to be as flush to the sole as possible.  
(Prevents any small debris from catching in the Aluminum Bar)**



Line up the bar with the appropriate row.

**Before attaching bar- apply pressure on bar as displayed in picture:**



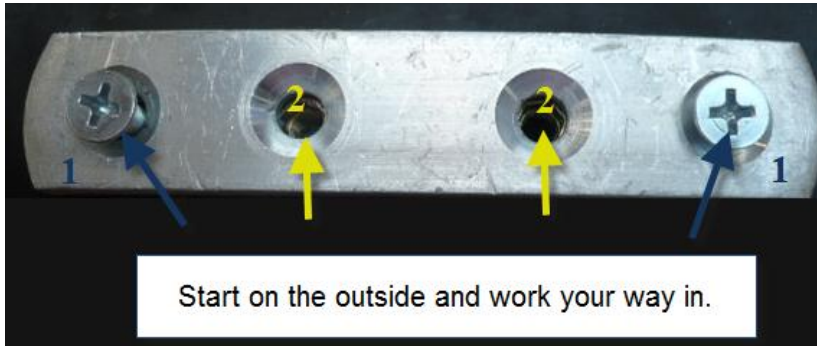
Once the bars have been slightly bowed to mirror the sole of the shoe, the bars can be attached using the screws and Loctite- blue 242.



Place small drop of Loctite on the end of the screw, like so:



Only want to cover first 3-4 thread of the screw.



Once all screws have been inserted and bar is securely attached to the shoe. Repeat the steps for the remaining bars that need to be replaced.

**\*\*\* Please recycle used metal parts appropriately\*\*\***

Replacement kits are available through the website, customer service, Patagonia retail stores and fly fishing dealers.

## Patagonia Aluminum Bar Replacement Kit

\$29.00

Style No. 81690



## For further assistance or questions regarding this or other Patagonia products contact:

### Phone

1-800-638-6464

Patagonia Customer Service Reps are available for inquiries weekdays from 6am to 6pm, and weekends from 8am to 4pm (PT). Phone orders are accepted 24 hours a day, 7 days a week.

### Email

[customer\\_service@patagonia.com](mailto:customer_service@patagonia.com)

### Facebook

[www.facebook.com/patagonia](http://www.facebook.com/patagonia)

Become a fan to post questions, comments and photos.

### Twitter

[www.twitter.com/patagonia\\_cs](http://www.twitter.com/patagonia_cs)

Tweet your customer service questions.

## Address

You can also mail your orders and questions to us.

### United States

Patagonia Mail Order

8550 White Fir St.

P.O. Box 32050

Reno, NV 89523-2050

## International Inquiries

For any other location not listed below, please use our Store Locator to find your nearest Patagonia store/dealer.

### Canada

Canadian customers may contact Patagonia Mail Order by phone (1-800-638-6464).

### Japan

Visit [www.patagonia.com/japan](http://www.patagonia.com/japan). Japanese customers may contact Patagonia Japan Mail Order by phone (011-0088-252-252 or 0467-23-8972) or email [customerservice@patagonia.co.jp](mailto:customerservice@patagonia.co.jp).

### Europe

European customers may contact Patagonia Europe by phone (011-+33 [0] 4 50 88 44 89), fax (+33 [0] 4 50 88 44 99), or email ([directsales\\_europe@patagonia.com](mailto:directsales_europe@patagonia.com)).

### Italy

Patagonia Italia may be reached by phone (011-39-0474-555-396) or fax (011-39-0474-552-208).

### Chile

Patagonia Chile may be reached by phone (011-56-2-2168420) or fax (011-56-2-2450784)

### Argentina

Patagonia Buenos Aires may be reached by phone (011-54-11)-4393-1852 or fax (011-54-11)-4393-1852